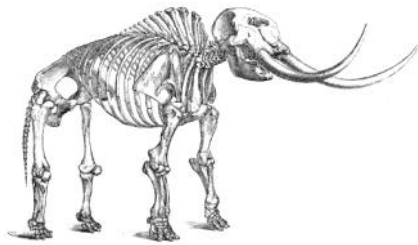




Monroe County's Mastodon highlight of special exhibit in Harrisburg

The Marshalls Creek Mastodon will be the highlight of the upcoming *Tusks! Ice Age Mammoths & Mastodons* exhibit at the State Museum



of Pennsylvania in Harrisburg from January 24 through May 2, 2010. This display will present the fascinating story of extinct mammoths, mastodons and their

tusked relatives that roamed North America from 15 million to 10,000 years ago. Visitors will follow fossils from the field to the laboratory to a museum exhibit.

The staff members from the Phil Fraley Productions, Inc. are assembling the Marshalls Creek Mastodon skeleton on a framework of steel that will support the skeleton. Then it will be moved to a major new section of the third-floor Hall of Geology, which will open in fall, 2010. Staff from The State Museum of Pennsylvania excavated the Marshalls Creek Mastodon from a peat bog in Marshalls Creek in 1968. Nearly 90% of the mastodon skeleton was retrieved. Only a few of the bones were missing, and some other bones were damaged. The damaged bones have been restored, and missing bones have been replaced using casts from a similar-size mastodon.

For over 35 years, only half of the Marshalls Creek Mastodon was on display in the Hall of Geology for visitors to see. The other half (the right side) was stored in the collections of The State Museum. This exhibit will bring the entire skeleton together for the first time in a state-of-the-art mount. Restored in a life-like pose, and properly conserved for the first time, this skeleton ranks as one of the most important mastodon specimens known from North America.

The State Museum of Pennsylvania, located in Harrisburg is open Tuesday through Saturday, 9 a.m. to 5 p.m., and Sunday, 12 noon to 5 p.m. General admission is \$3.00 for adults, \$2.00 for children/senior citizens. For more information on *Tusks!* as well as other programs, exhibitions and events at The State Museum, click on www.statemuseumpa.org.

Plan to visit The State Museum of Pennsylvania to view this piece of important Monroe County prehistory!

Buy-A-Bone Campaign for Marshalls Creek Mastodon

Holiday shoppers looking for something – anything – for that person who has everything now can buy bragging rights to a piece of Pennsylvania's prehistoric history – one of the 300 bones that comprises a 12,000-year-old mastodon soon to be unveiled at The State Museum of Pennsylvania.

The non-profit Friends of the State Museum is launching the **BUY-A-BONE** campaign at www.pabookstore.com as part of a year-long effort to raise funds to reconstruct the Marshalls Creek mastodon and to build the massive creature a new home at the museum.

The mastodon is comprised of roughly 263 bones. Donors may purchase a bone for \$25 up to \$25,000 for the animal's skull. All donors will receive a certificate commemorating their purchase as well as an invitation to a special preview of the mastodon to be held in January, 2010. In addition, all of the 'owners' will be named on a plaque that will hang in the new exhibit hall.

The Friends' goal is to raise \$250,000 to help defray the extraordinary costs of reconstructing the mastodon and building the new Paleontology Gallery where the mastodon will live. The new gallery on the museum's top floor will be comprised of four areas and a series of dioramas with interactive tools for visitors.

The mastodon is the most complete skeleton of its kind ever discovered in Pennsylvania. Growing to nearly 20 feet long (from rear to tip of tusks) and 9 feet high, the creature weighed 4 to 5 tons.

Buy-A-Bone is just one facet of The Friends' year-long effort to support the new exhibit. The Friends will seek corporate partners interested in sponsoring the four areas and special features in the new gallery space, as well as a series of family-oriented events for the coming year.

MCHA Sponsors

Many thanks to our Sponsors.
Please let them know you appreciate
their support of the Monroe County
Historical Association.

Small Business (\$150.00)

Dunbar Enterprises, Inc.
Frailey Insurance Agency
Huffman's Electric
Inn at Pocono Manor
Joseph P. McDonald, Esq. P.C.
Lombardo and Lipe
Schnaitman's Flooring America
Smuggler's Cove
Strunk-Albert Engineering
Thomas Funeral Home

Corporate (\$250.00)

A. C. Henning Enterprises, Inc.
BioSpectra Inc.
ESSA Bank and Trust
Great Wolf Resorts
Keystone Nazareth Bank & Trust
Newman, Williams, Mishkin, Corveleyn,
Wolfe and Fareri
PNC Wealth Management
Pocono Living Magazine
Pocono Produce Company
Shawnee Inn and Golf Resort
Skytop Lodge

Municipal (\$250.00)

Borough of East Stroudsburg
Borough of Mount Pocono
Borough of Stroudsburg
Hamilton Township
Middle Smithfield Township
Pocono Township
Smithfield Township
Stroud Township

Educational (\$250.00)

East Stroudsburg University of PA
Pocono Mountain School District
Stroudsburg Area School District

Contributor (\$500.00 and more)

Northampton Community College
PPL Electric Utilities - \$1,000.00
Rotary Club of the Stroudsburgs

*The Monroe County Historical
Association receives generous
support from the*

*Pennsylvania Historical &
Museum Commission*

and the

*Monroe County
Commissioners.*

Thank you!

Calendar of Events

MCHA Offices Closed

November 26 through November 30
Happy Thanksgiving!

Annual Holiday Luncheon at the Stroud Mansion

December 10 and 11

Enjoy a hot buffet luncheon catered by Everybody's Café
Seating 11:00 a.m. - 1:00 p.m. Please see flyer for additional details and menu.

Jacob Stroud Corporation's Festival of Carols

Saturday, December 12, 4:00 - 7:00 p.m.

Stroudsburg's Main Street comes alive for the holiday season.
Downtown venues include music, dance and art displays.
Open House at the Driebe Freight Station featuring an exhibit by the Pocono Photo Club

Week of December 14 - 20

Driebe Freight Station open 5:30 - 8:00 p.m.

Exhibit by the Pocono Photo Club

In conjunction with the Stroudsburg Fire Department Christmas Light Display

Dave Russell Memorial Christmas Concert

at the Stroud Mansion

December 18, 7:30 p.m.

Free and open to the public



MCHA Offices Closed

Thursday, December 24, 2009 - Monday, January 11, 2010

Happy Holidays!

A Purr-fect gift for the holidays



A Cat's Meow of the historic Stroud Mansion will be available just in time for the holiday gift-giving season. The 2009 Stroud Mansion Cat's Meow has been up-dated from the original 1993 version. The Cat's Meow Company, located in Wooster, Ohio, creates highly-collectable two-dimensional wooden buildings that fit in the palm of your hand.

Technology has allowed for greater detail of the structure including improvements in the look of the stonework and the slate roof. Even the decorative lamps, hanging baskets and an American flag are present. Of course, Casper, the famous black cat trademark, is relaxing on the windowsill.

The Stroud Mansion Cat's Meow truly captures the beauty of our building and makes a great gift to display in any home or office. The cost is \$18.00 plus sales tax. Remember, MCHA members receive a 10% discount in the museum store! Stop by to get your Stroud Mansion Cat's Meow keepsake today; your purchase will help us in our mission to promote, protect and preserve our local history.

Image used with permission by Cat's Meow Village.



As a senior art history major at East Stroudsburg University, I am currently working on two research projects that are a requirement for my internship. Initially, I wanted to learn more about the lifestyles of the wives of Jacob Stroud and his two eldest sons, John and Daniel Stroud. I spent about a month thoroughly sorting through the MCHA library searching the Stroud file box, reading Daniel's Letter Book and going to the Monroe County Archives in the courthouse in hopes of piecing together the Stroud women's lives. Unfortunately, the information I was seeking was not there and, as a result, the decision was made to move forward onto a new project. If any MCHA members have additional information on the Stroud ladies, I would love to hear from you!

Currently, I am working on the artwork hanging in the Stroud Mansion. I am categorizing, cleaning, bringing the accession cards up to date and/or creating a new card for the pieces of artwork in each of the exhibit rooms. The goal is to display additional information (about the painting and the artist) in each room to complement the current tours. I am hoping our visitors can be educated further on the amazing pieces in the collection.

My second project is to redevelop the current self-guided walking tour of the downtown historical buildings and landmarks that Stroudsburg has preserved throughout the years. I will expand the format to include an audio headset. The audio headset will provide a greater amount of information on each historical landmark, which was not allowable in the written brochure. Through this new walking tour, visitors will start at the Stroud Mansion and work their way throughout the downtown, viewing historical sites along the way. From



Leslie takes down the Emily Stroud portrait to document.

Courthouse Square, Newberry's Five and Dime, the Dansbury Cemetery and the Driebe Freight Station, visitors and residents will be able to learn about the structures of Stroudsburg. The walking tour will enable people to understand better and appreciate the mixture of architecture; ranging anywhere from the English Gothic Revival of the Stroudsburg United Methodist Church to the Kern-Keifer House to the Richardsonian Romanesque style of the Courthouse Square and to learn the history of the county. The target date to be completed is mid-December, 2009.

My time, thus far as an intern at the Monroe County Historical Association, has been an enjoyable experience. The staff and weekly volunteers are a pleasure to work with and make the Stroud Mansion a very inviting and welcoming place to come each week. I would like to encourage the members to come and visit the Stroud Mansion especially in the upcoming weeks, as we will be decorating for the upcoming holidays. I look forward to meeting you all soon.

Welcome New Members!



Since August 1, 2009

Robert and Maureen Ace
Linda G. Darby
Leroy A. Gearl, Jr.
Eugene F. Gray
Ed and Maryanne Hessinger
Janet L. Johnson
The Kearns Family
James Lamason
Gary R. Lewis
Chuck Ni Claus

Member get a Member
The Brooks Family
(referred by Dr. Martin Wilson)

Liztech Fanlight Pin is still available



The MCHA Liztech Fanlight pin is back and available for purchase. Having sold out years ago, Liztech Jewelry has remade this popular fundraiser pin for our organization.

Long before electricity, the decorative window above the front door of the Stroud Mansion would allow sunlight into the hallway. This window is called a fanlight.

The Fanlight pin is available for \$55.00 at the MCHA Museum Store or at the Liztech Gallery in East Stroudsburg. The pin makes a great gift and is in limited supply. Proudly wear the pin and show the community that you support local history.



Membership Form

RENEWAL NEW MEMBER
Please check appropriate category.

- Student \$10.00
- Individual \$25.00
- Family \$35.00
- Senior Individual (65 and over) \$15.00
- Senior Couple (65 and over) \$20.00

Annual Contributions (Includes Dues)

- Patron \$50.00
- Supporter \$100.00
- Business \$150.00
- Corporation/Municipal \$250.00
- Contributor \$500.00

LIFE

- Individual Life Membership \$1,000.00
- Spouse joining (Life) at the same time \$500.00

Name _____

Address _____

City _____

State _____ Zip _____

Telephone _____

E-mail _____

- Please call me about volunteer opportunities.

Please detach and mail to:
Monroe County Historical Association
900 Main Street
Stroudsburg, PA 18360

Referred by: _____

Thank you for your support.

Beautiful Autumn Day for Golf Tournament



"On Par with History" first place team:
Al Strauss, Barry Cohen, Tom Dirvonis,
and Charles Eyer

The Third Annual "On Par with History" Golf Tournament was held Monday, September 21, 2009 at Great Bear Country Club in East Stroudsburg. Over 30 golfers hit the links under bright sunshine, colorful trees and crisp autumn air. Following the tournament, both players and non-golfing guests enjoyed a delicious sit-down meal. Prizes and a silent auction completed the evening. A special thank you to all the members of the Scott Family. Russell Scott III once again spearheaded this major fundraiser and worked to ensure this fundraiser was a success.

Prizes and a silent auction completed the evening. A special thank you to all the members of the Scott Family. Russell Scott III once again spearheaded this major fundraiser and worked to ensure this fundraiser was a success.

Congratulations to all of our winners!

First Place team: Charles Eyer, Tom Dirvonis, Al Strauss, Barry Cohen

Second Place team: Craig Scott, Tim Krupp, J. Krupp, Ken Maula

Third Place team: David Rheinheimer, Pat Ashcroft Steve Godin

Closest to the Pin winner - Charles Eyer

Straightest Drive - Rick Esposito and Dana Foley

Thank you to everyone

who made this event a great success!

Tee Sponsors included: A.C. Henning Enterprises; Bennigan's Grill & Tavern; Bushkill Falls - "The Niagara of Pennsylvania"; Dunbar Enterprises Incorporated; Eugenia S. Eden; ESSA Bank and Trust; Dr. David Fox, Family Dentistry; Dr. and Mrs. Vincent Francescangeli; Huffman's Electric; Lombardo and Lipe Electrical Contractors, Inc.; The Scott Family; Shawnee Mountain Ski Area; State Representative John J. Siproth; and Young and Haros, LCC.

Benefits of Membership

- Pride in preserving the history of Monroe County
- Free Admission to all MCHA sites
- 10% discount in our Gift Shop
- *The Fanlight*, our newsletter, issued 6 times a year
- Volunteer Opportunities
- Genealogy Assistance
- Discounts on MCHA events
- Advanced notice of all MCHA programs, events, workshops
- Discount Research Assistance



From the Executive Director

Amy Leiser

I recently had a wonderful opportunity to attend a two-day workshop at Grey Towers National Historic Site in Milford, Pike County, Pennsylvania. Ken Sandri, Assistant Director for Preservation and Resource Management at Grey Towers and MCHA member, invited me to join the annual Region 9 Forest Service Heritage Conference this past October.

Forest service employees traveled from all parts of the Region 9 district to participate in this informative and supportive conference. Archaeologists from Maine to Missouri and from Wisconsin to West Virginia gathered at Grey Towers to share information, to meet with fellow archaeologists, and to develop solutions for preserving the rich cultural resources found within Forest Service boundaries. From ancient archaeological sites to Civil War-era cabins, these Resource Managers are in charge of these historical sites.

Following day-long presentations and discussions, dinner was served at the famous outdoor dining table, known as the Finger Bowl, located on the grounds of Grey Towers. This was a special treat! Grey Towers was the home of Gifford Pinchot (1865-1946). Pinchot is considered to be America's first forester; he served as the first chief of the US Forest Service and was two-time Governor of Pennsylvania. Visitors are welcome at Grey Towers and, if you haven't been, I suggest you tour this beautiful building and its grounds!

The following day, our group received an insider's tour of some of the historic buildings within the Delaware Water Gap National Recreation Area from Brennin Carter, Cultural Resource Management Specialist. Our day-long tour took us on both the Pennsylvania and New Jersey sides of the Delaware River. It was a fascinating opportunity to explore these old homes and barns and to learn the history of these structures and the people who lived there.

It was so inspiring to network with another group of individuals dedicated to protecting our history. I am certainly aware of the numerous historical groups and organizations (including local, regional, statewide and national) striving to record and protect our history, but I never truly thought about the challenges that archaeologists working for the National Forest Service also face. Forest Service archaeologists deal with the same trials that county historians do. From decisions regarding artifacts to developing preservation goals, the two disciplines and careers are intertwined.

MCHA Executive Director Amy Leiser and Assistant Director for Preservation & Resource Management Ken Sandri stand in front of Grey Towers National Historic Site in Milford, PA.



MCHA Officers

President
David B. Thomas
Vice-President
Martin Wilson
Secretary
Eugenia S. Eden
Treasurer
Patricia Saylor

Board of Directors

Charles Eyer
Charles Garris
William Leonard Jr.
Connie McCool
John Meixell
George Warden
James Werkheiser

Executive Director
Amy Leiser

Newsletter Editor
Kathleen Boyle

Museum Assistant
Halle Smith

Bookkeeper
Mergie Manner

2009 Meetings

The MCHA Board of Directors meets the fourth Tuesday of the month at 7:00 p.m. at the Stroud Mansion.

November 24
December -- no meeting



MCHA Raffle

Be sure to buy your tickets for the MCHA annual raffle fundraiser! Raffle

tickets are \$5.00 each OR 5 tickets for only \$20.00. Take a chance today to win one of three great prizes: 14K lemon citrine pendant and chain created by local jeweler, Daniel Varipapa of Findings Jewelry, framed print of the historic 1795 Stroud Mansion by Dee Huxster, MCHA gift basket (1-year family membership, ornament, t-shirt, books, and more) All of the proceeds benefit MCHA.

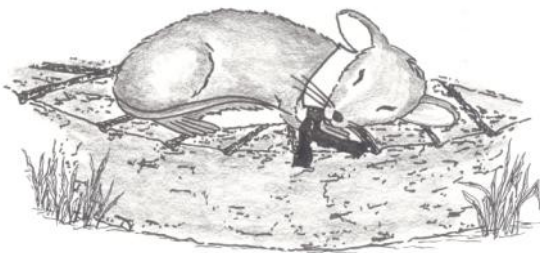




From the millstone

Mills played a key role in early communities.

As winter approaches, I thought I should take advantage of the warm autumn day and venture outside of the Mansion. After skirting the perimeter of the property, I looked for a place to take a nap. I scurried through the brightly colored leaves on the Ninth Street side of the Mansion and spotted the ideal location for a nap under the sun. The grooves in the millstone made it easier for my vertical climb. I stretched out across the warm top of the millstone and in no time at all I was in dreamland.



Perhaps it was the location, for my mind was creating images of millstones from an earlier time. The role of millstones has certainly changed. Now used as decorative additions to the garden, from the time of the earliest settlers to the late 19th century they were vital to the economy of the community. William Penn had the foresight to bring a miller, Caleb Pussey, with him on the *Welcome* on his first trip to America. Also, on the ship was the framing for a mill. Bread was the staff of life of early settlers and farmers depended upon millers to grind their grain into flour. During the American Revolution, George Washington ordered the removal of the run stones from mills in areas near British troop encampments to prevent flour going to the enemy. The stones were identified with tar markings and returned to their mills of origin after the war.

Jacob and Daniel Stroud realized that mills would be essential to draw people to their new town. By the 1800s, gristmills dotted the map of what is now Monroe County. Huge wheels powered by water moved the gears that made the top millstone move. The grain was crushed between the top stone known as the run and the bottom stationary stone called the bed stone. The miller would set the distance between the stone according to the grain he would be grinding. The farmer's wheat

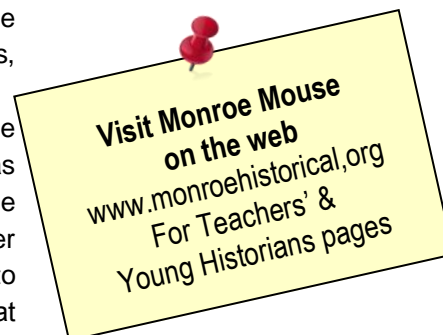


would need less space than his corn. The grooves on the millstones were called furrows and the flat surfaces between them land. The millstones were maintained by an artisan known as a dresser. He would rough up (dress) the stone every few weeks. He used an iron pick and hammer to do this. Slivers of metal and pieces of stone were often driven deep into the back of his hands.

The early millers kept a portion of the grain they ground as payment for their service. Any excess they traded for other supplies for their families. Most millers were outgoing people and their mills became gathering places to socialize and catch up on local news while farmers waited for their flour.

For Teachers:

The 1875 19"x23" maps of Monroe County townships and towns offer evidence of grist and other mills and highlight the importance of water power in their operation. A lesson plan (appropriate for grades 3 and higher) using one of these maps is on the MCHA web site www.monroehistorical.org. The lesson addresses geography and economic National Academic Standards. The maps may be purchase at the Stroud Mansion for \$2.00 each.



Breaking News

Monroe Mouse and his friends Sarah Spider and Caleb Cricket have all been officially copyrighted.

They are the official property of the Monroe County Historical Association.



Second Annual "Run for History" Great Success

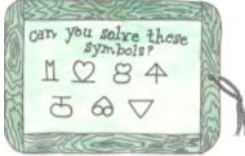


MCHA kicked off its second annual "8K Run/ 5K Walk for History" on Sunday, October 4, 2009 at the historic Antoine Dutot School and Museum in Delaware Water Gap. A shotgun start signaled the beginning of the event, where over 70 runners and walkers raced through beautiful Cherry Valley. Overall first place male runner went to Eric Robbins, with a time of 32:05, and Shannon Ludka took the women's overall first place, clocking in at 37:33. This year, John Heatherington and Mercy Shemansky took the overall first place spot for male and female walkers.

A very special thank you goes out to the "Run for History" race committee members: Rachael Frick-Cardelle, Martin Wilson, and Paul Shemansky. Also, thank you to Scott Ewing from the Pocono Area Running Club, to the MCHA staff, volunteers and interns and to the members of the Dutot Museum, who provided hot coffee and refreshments for the race participants.

Sponsors of the "Run for History" fundraiser include: American Ribbon and Fabric, Castle Inn, Delaware Water Gap Chamber of Commerce, Dellaria & Associates, Inc., Street Teams USA Equilibrium, Inc., ESSA Bank and Trust, Huffman's Electric, Inc., Lombardo & Lipe Electrical Contractors, Inc., Northampton Community College, Pocono Fitness Centers, Inc., Strunk-Albert Engineering, yourwebsite2go.com, The Frick-Cardelle Family, Bill and Sandy Leiser, State Rep. Mario M. Scavello, Paul, Mercy and Paxton Shemansky, Catherine E. Trinkle, CPA, Martin and Susan Wilson, Ken and Company, The Inn at Pocono Manor, The Gem and Keystone at Shawnee, Spa Shawnee, Delaware Water Gap Trolley, ESU Bookstore and the Village Farmer and Bakery. Thank you for your support!

This 2009 "Run for History" fundraiser was such a great success, the committee already has begun to plan for next year. Hope to see you there!



can you solve these symbols?


11 ♡ 8 4
 ☺ ♠ ▼

Last issue's puzzle was a mirror image for the numbers 1-7

Do you see it now?

Can you match the mill sayings?

<u>Then</u>	<u>Now</u>
"roughed up"	prove your skill, courage, or strength
"put through the mill"	beaten up
"grist for the mill"	plain or ordinary
"show your mettle"	something to think about
"run of the mill"	person who is having trouble



CALLING ALL HISTORY FANS!



Do you support local history? Do you have a facebook account? Then you're just the person we're looking for!

The Monroe County Historical Association has a new "fan" page on facebook and we would love to have your support. Keep up-to-date on all of the latest historical happenings, events, fundraisers and activities throughout Monroe County.

Visit the MCHA Web site at <http://monroehistorical.org> and click on the facebook logo on the right. Become a fan of the Monroe County Historical Association through your facebook account today and be sure to suggest it to all of your friends. See you on the web!



MONROE COUNTY HISTORICAL ASSOCIATION

E-mail address - mcha@ptd.net
Fax (570) 421-9199
Web site - www.monroehistorical.org

Stroud Mansion

900 Main Street, Stroudsburg (570) 421-7703
9:00 a.m. - 4:00 p.m., Tuesday - Friday
10:00 a.m. - 4:00 p.m., 1st and 3rd Saturdays
Tours daily at 10:00 a.m. and 2:00 p.m.

Driebe Freight Station Art Gallery

537 Ann Street, Stroudsburg
Open for special events throughout the year.

The Bell School

Cherry Valley Road, Stormsville - Hamilton Township
1:00 - 4:00 p.m., Sundays, July and August
(Closed Sunday, July 5, 2009)
Other times by special appointment.

Please renew your membership!

If there is a **colored dot near the mailing label** of this newsletter, your membership has lapsed and this will be your last MCHA mailing.

Please fill out the membership form and renew today! We wouldn't want you to miss any of the exciting and unique programs, workshops and fundraising events we have planned.

The Monroe County Historical Association values your continued participation and support. Thank you.

The mission of the Monroe County Historical Association is to promote, protect and preserve the rich history of Monroe County.



Monroe County Historical Association
900 Main Street
Stroudsburg, PA 18360

NON-PROFIT
U.S. POSTAGE
PAID
STROUDSBURG, PA
PERMIT NO. 336

RETURN SERVICE REQUESTED