



THE FANLIGHT

Vol. 23, No. 5

Monroe County Historical Association • www.monroehistorical.org

September-October 2012



Leslie Goynes stands with our Charles Schreyvogel painting in the Children's exhibit room. See story, Page 5



Scott Meade developed the exhibit at the Eastern Monroe Public Library.



Kelly Chicco displays her bottle exhibit, "All Bottled Up."

Big benefit to MCHA **ESU interns lend welcome hands**

By Amy Leiser
Executive Director

The summer months are very busy here at the Monroe County Historical Association. So many visitors, both local residents and out-of-town guests, stop by the Stroud Mansion to take a tour of our lovely historic home or look through our archives to research their ancestors, their homes or look through our large photo collection. Needless to say, we can use all of the extra help that is given to us during these months.

We are lucky to have three students from East Stroudsburg University serving as interns here at the Stroud Mansion. Both Scott Meade and Kelly Chicco are public history majors and Leslie Goynes is an art history major. All three of these great students have been

invaluable to everyday life here at MCHA.

Scott developed the small display that is on exhibit in the Eastern Monroe Public Library's second-floor display cabinet. "Fin, Feather and Fur, Hunting and Fishing in Monroe County" will be up through the fall months. Scott dug through the collections, cleaned the artifacts and prepared the display. It is a wonderful opportunity for a part of the MCHA collection to be on loan in another venue and a great hands-on opportunity for Scott.

Kelly sorted, catalogued and researched the MCHA's collection of milk, soda and beer bottles. She then worked to create an interesting display in the dining room alcove called "All Bottled Up, A Collection of Local Glass Bottles." Many of our guests, when they view her exhibit, begin to

Story continues, Page 4

MCHA Sponsors

*Many thanks to our Sponsors.
Please let them know you
appreciate their support of the
Monroe County
Historical Association.*

Small Business | \$150

Bailey's Steakhouse
Dunbar Enterprises, Inc.
Frailey Insurance Agency
Huffman's Electric
Inn at Pocono Manor
Smuggler's Cove
The Frogtown Inn & 6 Acres Restaurant
The Stone Bar Inn
Thomas Funeral Home

Corporate | \$250

A. C. Henning Enterprises, Inc.
ESSA Bank and Trust
KNBT | National Penn Bank
Newman, Williams, Mishkin, Corveleyn,
Wolfe and Fareri
PNC Wealth Management
Pocono Living Magazine
Pocono Produce Company
Shawnee Inn and Golf Resort
Skytop Lodge

Municipal | \$250

Borough of East Stroudsburg
Borough of Mount Pocono
Borough of Stroudsburg
Hamilton Township
Middle Smithfield Township
Pocono Township
Smithfield Township
Stroud Township

Educational | \$250

East Stroudsburg Area School District
East Stroudsburg University of Pa.
Northampton Community College
Pocono Mountain School District
Stroudsburg Area School District

Contributor | \$500 or more)

PPL Electric Utilities - \$1,000
Rotary Club of the Stroudsburgs

*The Monroe County Historical
Association receives generous
support from the Cherry Lane
Foundation and
the Monroe County
Commissioners.*

Thank you!

MCHA Calendar of Events

Saturday, September 1

StroudFest in downtown Stroudsburg
10 a.m. to 5 p.m.

The Stroud Mansion will be open for
free tours and the popular **Olde
Time Fun** children's activities
will be held in the backyard
garden. Part of Strouds-
burg's fall festival.

Saturday, November 10 "Outsider" Artists of the Middle Delaware.

Art exhibit and auction fundraiser
featuring the artwork of Strauser, Rasely,
Savitsky, McCarthy and Gothard. Shawnee
Inn & Golf Resort, Shawnee-on-Delaware.

See story on Page 3



Thursday, December 6 & Friday, December 7

Holiday Luncheon at the Stroud Mansion

Two seatings each day. Join us for either an early lunch from 11 a.m. until 12:30 p.m. or a late lunch from 1 p.m. to 2:30 p.m. *Details to be announced.*



Smithfield Township will dedicate
its new veterans memorial on
Saturday, September 15, from 1
to 3 p.m. The Memorial Terrace at
Smithfield Township Waterfront
Park, Twin Falls and Red Fox roads,
East Stroudsburg, was an Eagle
Scout project through Troop 100.
All are welcome at this event,
which will honor all veterans.

Call (570) 223-5082 or visit
www.smithfieldtownship.com





This painting by Pennsylvania folk artist Jack Savitsky (1910-1991) will be among the works by "outsider artists" featured at a MCHA fundraiser on November 10.

'Outsider Artists' show planned

MCHA looking for artwork from members to show

The Monroe County Historical Association, in conjunction with the Shawnee Inn and Golf Resort and Hartzell's Auction Gallery, will host our third annual art and auction fund-raiser this autumn. This year's theme will highlight "outsider" artists and will feature the work of Sterling Strauser, Robert Rasely, Jack Savitsky, Justin McCarthy, and Bill Gothard.

Guests will be treated to a special viewing with off-market purchase opportunities and an intimate four-course meal surrounded by the artwork. The exhibition, dinner and auction will be held Saturday, November 10, at the Shawnee Inn and Golf Resort, 1 River Road, Shawnee-on-Delaware. *Mark your calendars now!*

MCHA members and friends are welcome to loan their artwork for this weekend event. Please contact the MCHA offices at (570) 421-7703 if you are interested in loaning a piece done by the feature artists. For auction information, please contact Hartzell's Auction Gallery at (800) 724-6808 or visit www.hartzellsauction.com.

Look in your next edition of *The Fanlight* for further details about this special November dinner, exhibition and auction.



Monroe County
Historical Association

Welcome, New Members

As of July 1, 2012

June F. Clark
Priscilla Cummiskey
Thomas Famularo
Donald Gilbert
George and Kathy Gonzalez
The Gore Family
Elaine Leies and Family
Barbara Reed
Ruth Ann Smith
Lois Wagner

Benefits of Membership

- Pride in preserving the history of Monroe County
- Free admission to all MCHA sites
- 10% discount in our Gift Shop
- *The Fanlight*, our newsletter, issued 6 times a year
- Volunteer Opportunities
- Genealogy Assistance
- Discounts on MCHA events
- Advanced notice of all MCHA programs, events, workshops
- Discount research assistance

BEATING THE DRUM FOR COFFEE CANS

The Education Committee needs your empty metal 11oz. coffee cans with plastic lids. Children will color a template, tape it to the can, and make their very own Civil War drum.

Please drop off cans at Stroud Mansion



Join or Renew Today

☐ RENEWAL ☐ NEW MEMBER
Please check appropriate category.

- | | |
|--|---------|
| <input type="checkbox"/> Student | \$10.00 |
| <input type="checkbox"/> Individual | \$25.00 |
| <input type="checkbox"/> Family | \$35.00 |
| <input type="checkbox"/> Senior Individual (65 and over) | \$15.00 |
| <input type="checkbox"/> Senior Couple (65 and over) | \$20.00 |

Annual Contributions (Includes Annual Membership Dues)

- | | |
|--|----------|
| <input type="checkbox"/> Patron | \$50.00 |
| <input type="checkbox"/> Supporter | \$100.00 |
| <input type="checkbox"/> Business | \$150.00 |
| <input type="checkbox"/> Corporation/Municipal | \$250.00 |
| <input type="checkbox"/> Contributor | \$500.00 |

LIFE

- | | |
|---|------------|
| <input type="checkbox"/> Individual Life Membership | \$1,000.00 |
| Spouse joining (Life) at the same time | \$500.00 |

Name _____

Address _____

City _____

State _____ Zip _____

Telephone _____

E-mail _____

- ☐ Please call me about volunteer opportunities.

Please detach and mail to:
Monroe County Historical Association
900 Main Street
Stroudsburg, PA 18360

Referred by: _____

Thank you for your support.



Coming in November

Plan to see a new Pocono Doll Club exhibit that will be on display this winter in the Victorian parlor:

Rare boy dolls and toys that little boys would have found under the Christmas tree in days gone by.

This special exhibit will open for the holiday, and continue into March.

Interns lend helping hands

Continued from Page 1

feel nostalgic when they see the milk bottles and recall a time when milk was delivered to their doorstep.

Leslie (who is completing a double internship) has been working to document and describe the artwork that hangs in the Stroud Mansion. She has done a tremendous amount of research not only on the subject of the paintings, but also on the artists.

We have always referred to our Charles Schreyvogel painting as "Portrait of Elizabeth Lewis Fisher," but Leslie discovered the actual name of the artwork is "Fairy Tales." Who says history doesn't change?

The staff and volunteers appreciate all of the hard work these dedicated students have done for MCHA. Their projects have not only improved our collections and enhance the experience our visitors receive, but also develop our exposure in the community as well. It will be sad to see them go, but I know they have all gained a great deal of experience, knowledge and appreciation for working in a small, volunteer-driven, non-profit county historical organization.



The Children's Room Portrait

The story behind famed artist Charles Schreyvogel

By Joan B. Groff

Now that our third floor has reopened, displaying the new Servant's Bedroom as well as the renovated Children's Room, a special work of art can be seen there again!

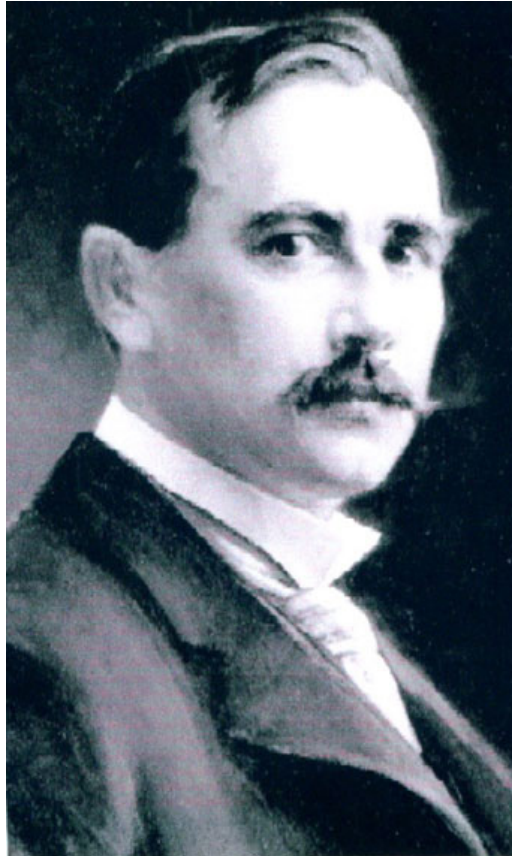
Charles Schreyvogel, 1861-1912, painted a portrait of Elizabeth Lewis Fisher, the eldest daughter of Dr. William Redwood Fisher, famously of the Pocono Laboratories housed in the stone country retreat he built in 1897 along what is now Route 611 in Swiftwater.

Schreyvogel was raised by impoverished German immigrant parents in New York City's Lower East Side, and showed a skill for drawing at a young age. Despite his father's disapproval, he struggled to learn his art, studying with professional artist, H. August Schwabe in New Jersey and teaching drawing classes as a teen.

He soon made a studio on the roof of his apartment building in Hoboken, N.J., and met one of his patrons there, the practicing Columbia University graduate, Dr. Fisher. The doctor's patronage, among others, enabled Charles to travel to Munich, Germany, for three years to study and paint.

In poor health, he returned after suggestions from Dr. Fisher and others that he visit the west. In 1893, he first saw Arizona and the Ute reservation of southwest Colorado. During additional trips, as he could afford, he made many studies of Native Americans in their habitats, which he composed as finished paintings in his Hoboken studio.

These western paintings were not popular in the eastern United States, so he eked out a living painting portraits – one of which is owned by the MCHA. Dr. Fisher had his own portrait painted by Schreyvogel as well as by popular



artist, William Merritt Chase, another friend of the doctor's who also painted Mrs. Elizabeth Fisher, the doctor's wife.

In 1901, Schreyvogel's western painting, "My Bunkie," was recognized at the National Academy of Design with the Thomas B. Clarke Prize, setting a market for his large, meticulous and, therefore, limited canvases. This work is now in the collection of the Metropolitan Museum of Art, New York City.

A controversial debate occurred between the artist and fellow western painter/sculptor, Frederic Remington over the veracity of Schreyvogel's painting "Custer's Demand," with credit won by Schreyvogel. Following Remington's death in 1909, Schreyvogel became America's dominant western artist for the last three years of his life, always having to budget carefully for his art materials and travels west, and not

living long enough to view his popularity.

Charles Schreyvogel's works numbered less than 100, although there were prints made during his lifetime. His studio and collection now are permanently held by the Cowboy Hall of Fame in Oklahoma City,.

In viewing our portrait of Elizabeth Fisher as a young girl, the dark paint is immediately noticed and questioned. Study in Europe may be responsible for such usual backgrounds in portraiture in the late 1800s and early 1900s. And we recall that Schreyvogel far preferred painting active cowboys and Indians, but necessity required making a living often from portraiture.

I hope you will contemplate our Charles Schreyvogel treasure having more history and information when you next visit the Stroud Mansion.





MCHA Officers

President | Russell D. Scott III
Vice President | Martin Wilson
Secretary | Eugenia S. Eden
Treasurer | Clarence J. Murphy

Board of Directors

John Abel
Ruth Sibley Bensinger
Joan B. Groff
John Layton
Connie Mc Cool
John K. Meixell
Bonnie Rudeski
Michael Shepard
Jennifer Harlacher Sibum
George Warden

Staff

Executive Director | Amy Leiser
Museum Assistant | Halle Smith
Collections Specialist
Bret Fowler
Bookkeeper | Margie Manner
Newsletter Editor/Webmaster
Kim de Bourbon

2012 Meetings

The MCHA Board of Directors meets the fourth Tuesday of the month at 7 p.m. at the Stroud Mansion.

September 25

October 23

November 27

December – No meeting

The mission of the Monroe County Historical Association is to promote, protect and preserve the rich history of Monroe County, Pa.

2012 Spring Appeal

Generosity spells success

Thank you to the many members and friends of the Monroe County Historical Association who have contributed to this year's Spring Appeal. Through your generosity, \$3,180 has been raised!

This fund serves as the General Operating account for the organization and is used to keep the doors open at the Stroud Mansion Museum and Library and the Bell School. From paying the various utility bills to supporting staff salaries, the General Operating fund is an essential part of our organization. Your contributions are greatly appreciated. *Thank you again.*

Ian and Elaine Ackroyd-Kelly
B.J. Bachman
Dorothy Baldwin
Ralph and Eleanor Bender, Jr.
Dieter and Hannelore Boehmer
David and Barbara Braithwaite
Camille Breslauer
Randall E. Brown
State Rep. Rosemary M. Brown
Audree Chase
Louise Coffin
William B. and Barbara Cramer
Matthew J. Curran
J. Bruce Dunlop
Eugenia S. Eden
Jessie Eisel
Charles P. and Linda Eyer
John and Norma Fetherman
Gerald C. Gaunt
Mark Gibson
Joan B. Groff
William T. and Mary Grumbine
Alvin and Mary Hall
Jack and Paula Hallock
Mary A. Henning
Jay E. and Barbara Huffman
Raymond and Elizabeth Hynoski
Janet Johnson
George and Dolores Kappenhagen
Peter and Carol Kern
Vertie Knapp
Albert and Elizabeth Koster
James and Marjorie Lawless
Clyde D. Learn
Philip D. Lee

John and Amy Leiser
William Leiser
Ann Lichtenwalner
Mark and Wendy Lichty
Patricia Litts-Young
Letitia M. Lladoc
Edward Mayotte
Helen J. Marsh
Terence and Suzanne McCool
J. Gary and Karen McLoughlin
Sylvia F. Miller
Jeff and Susan Morris
John G. and Eleanor Muncie
Louise Pipher
Roy E. Pipher
Pocono Mts. Publications, LLC
Pocono Scenicards
Kathleen H. Pogue
Richard and Evelyn Primrose
William E. and Elsa Ramsden
Paul C. Reisch
John J. and Phyllis Riley
Donald S. and Barbara Robinson
Esther Scott
Skytop Lodge
Paul and Evelyn Smith
Lawrence Squeri
Anda Staab
Lois J. Swisher
Jill Thatcher and Family
James and Agnes Webb
Todd and Shirley Weber
Robert and Doris Wehe
James C. Werkheiser
Martin and Susan Wilson



Musings from the Mansion

as told to Kathy Boyle

Reporter in Residence, Monroe Mouse



Illustrated by Joan Groff

Serendipity — that is what I call what happened the other day at the Stroud Mansion, as I was at a loss as to what to write for the *The Fanlight* this month. In walks MCHA member Ed Gerhard with some items to be considered for acquisition. There were only a few things, so I thought I could sneak a look and not draw attention to myself.

There it was — a postcard, but not just any postcard. It would provide the topic for my article. Sent from Nazareth in 1911, the writer noted that the photo on the front was of the Glenwood Hall Community Band in Tannersville.

You younger people might say, “What is a community band?” It may be difficult to believe, but almost every town had a band by the 1880s and 1890s. All ages took part, making music for their own enjoyment and for members of their communities.

Members strutted forth in bold, colorful uniforms that projected a sense of community and patriotism. The earliest groups were brass bands and later woodwind instruments were added. By 1910, there were more than 18,000 town bands in the United States.

Without the distractions of the Internet, movies, and TV, the town bands drew large audiences who kept beat with the tunes of the day. The marches of John Phillip Sousa were popular, of course. Also popular was the “William Tell Overture” and let’s not forget “Take Me Out to the Ball Game.”

The Fourth of July was never without the appearance of the town band, often in a parade followed by a community picnic in the park. As early as 1873, there was a community band in Tannersville.

An entry in the diary of Alice Beisecker (age 17) of Poplar



Valley recounts one July 4:

We went along very nicely and came to Brown’s Hotel when the band marched out. The drum frightened the horse and spilled the girls out and that was quite a time. At ten the band came back and marched over to the woods where all had a very nice dinner and a lot of ice cream. [Diary entry edited by MM]

The band that Alice heard in 1873 may have been an earlier group from which the Glenwood Hall Band grew. MCHA member Jim Werkheiser relates in his

research that the Glenwood Hall Band was founded in Tannersville in 1887 (*The Jeffersonian*, March 1, 1988). His research indicates that there were at least 19 town bands in Monroe County from 1865 to 1900.

Community bands at this time were almost always evident at political rallies where they heightened the enthusiasm of the crowds. Patriotic parades provided a welcoming audience and often spurred competition among the bands. County fairs were also a venue. Today in Monroe County this tradition is carried on by the Trinity Centennial Band, founded in 1992. The band’s original director was Rus Speicher, Pocono Mountain School District band director. This band still plays many of the pieces played by town bands a century ago.

Although community bands are almost a thing of the past, school bands have assumed their place and provide the opportunity for the younger generation to develop their musical talents and entertain the public just as the town band did in the past.

Today, summer band concerts create a sense of an earlier era, foster a sense of community, and provide entertainment for young and old alike.

Source: *Explore PAhistory.com*



MONROE COUNTY HISTORICAL ASSOCIATION

(570) 421 7703 mcha@ptd.net

Fax (570) 421 9199

www.monroehistorical.org

STROUD MANSION

900 Main Street, Stroudsburg

10 am - 4 pm Tuesday-Friday

10 am - 4 pm 1st and 3rd Saturdays

Tours daily at 11 am and 2 pm

DRIEBE FREIGHT STATION

537 Ann Street Stroudsburg

Now serving as the headquarters
of the Jacob Stroud Corporation

570 424 0325

THE BELL SCHOOL

6183 Cherry Valley Road, Stormville

Hamilton Township

1-4 pm every Sunday in July and August

Other times by special appointment

MCHA Wish List

BEATING THE DRUM FOR COFFEE CANS

The Education Committee needs your empty
metal 11oz. coffee cans with plastic lids.

Children will color a template, tape it to the can,
and make their very own Civil War drum.

Please drop off cans at the Stroud Mansion



Visit the MCHA Web site

<http://monroehistorical.org>

Click on the facebook logo on the right. Become a fan of the Monroe County Historical Association through your facebook account today and be sure to suggest it to all of your friends.

Has your address changed?

If you have a new mailing address due to the Monroe County addressing project, please let us know. We don't want you to miss any of the exciting events, fundraisers, programs and workshops offered by MCHA. Please contact Halle Smith by emailing your new address to mcha@ptd.net or by calling (570) 421-7703.

RETURN SERVICE REQUESTED

